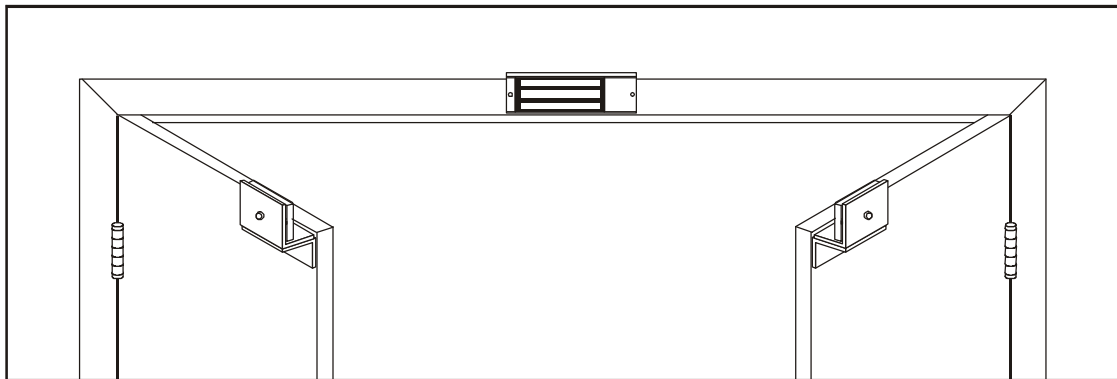


INSTALLATION DESCRIPTION

The Series 3001xTJ31 is a 700 pound holding force top jamb-mounted electromagnetic lock designed to secure a double-inswinging pair of doors. The lock requires both installation procedures as described herein and in the separate wiring instructions included.

Typical installations of the lock on double-inswing doors:



HANDLING

Care must be taken that the lock face and armature face are kept free of dirt, rust, paint, or any other obstruction which may interfere with the lock and armature making good contact. These faces may be cleaned with a non-abrasive pad and wiped with an oil dampened cloth.

MECHANICAL INSTALLATION

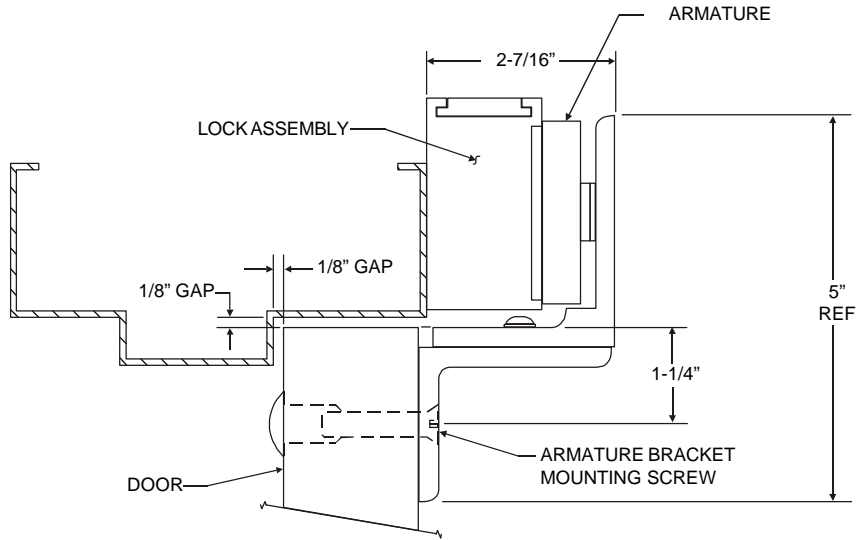
Familiarize yourself with the door and frame conditions. The lock must mount rigidly to the face of the door frame header. The door mounted armature is supplied with an adjustable mounting bracket and hardware that allows it to pivot slightly to compensate for reasonable misalignment.

ELECTRICAL INSTALLATION

After mechanical installation is complete the lock needs to be wired to a 12 or 24 VDC/VAC power source. Once low voltage power is supplied the unit is fully operational. All other wiring is for selected options. Refer to the separate wiring instructions included for further information.

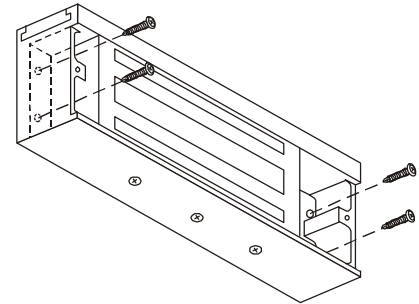
MOUNTING CONSIDERATIONS

1. Individual door and frame conditions may vary. Dimensions shown at right are for a typical hollow metal door and frame.
2. The lock assembly should be mounted to the center of the frame header for maximum performance. Verify that there is proper clearance for the lock assembly at the planned mounting location.

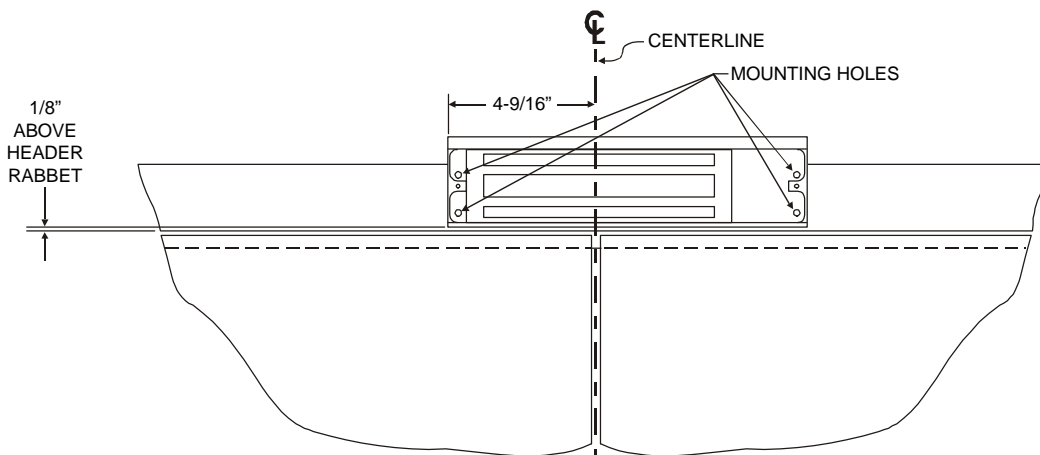


INSTALL THE LOCK ASSEMBLY

1. Drill out the four dimpled mounting hole locations inside the back of the lock housing using a 3/16" drill. Position the lock assembly on the face of the frame header, on the pull side of the door, as shown. Locate and mark the centers of the four mounting holes.
2. Drill the marked holes in the face of the frame header:
 - a. Four (4) 1/8" dia. slotted mounting holes, 1" deep.



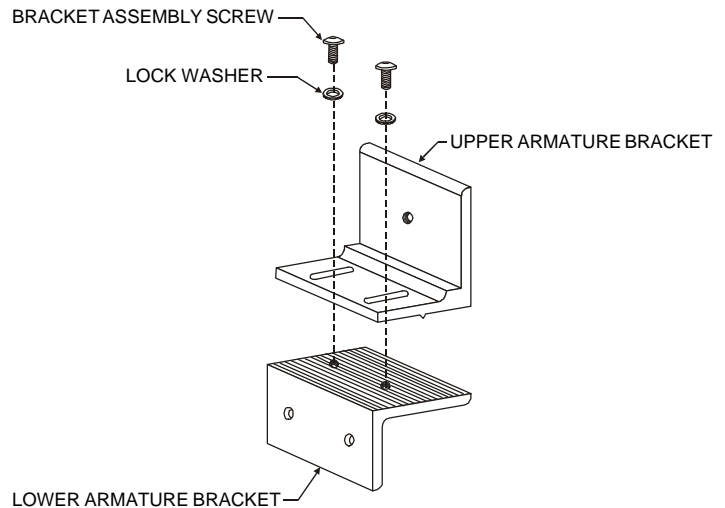
- Attach the lock mounting bracket to the frame header using
3. four (4) #10 x 1" pan head Tek screws. Firmly tighten the screws using a #2 phillips screwdriver.



ASSEMBLE THE ARMATURE MOUNTING BRACKET

Using the two lock mounting screws and brass spacers attach the lock assembly to the lock mounting bracket as shown. The lock assembly will need to be removed later to add the remaining bracket mounting screws, after all hardware adjustments have been made.

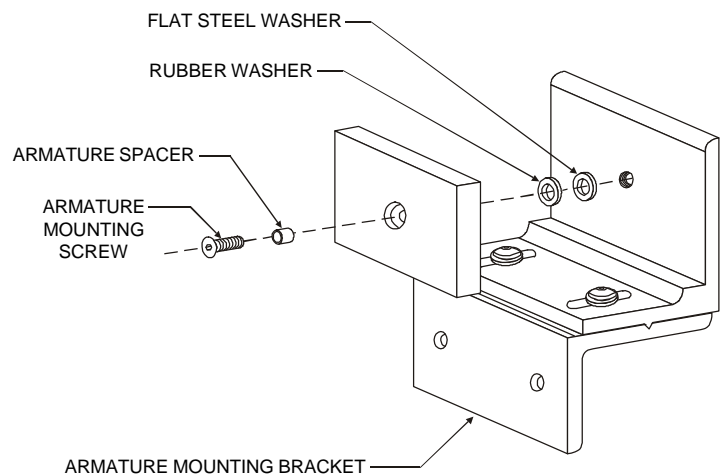
Firmly tighten the mounting screws with a 3/16" hex wrench.



ATTACH THE ARMATURES TO THE ARMATURE MOUNTING BRACKETS

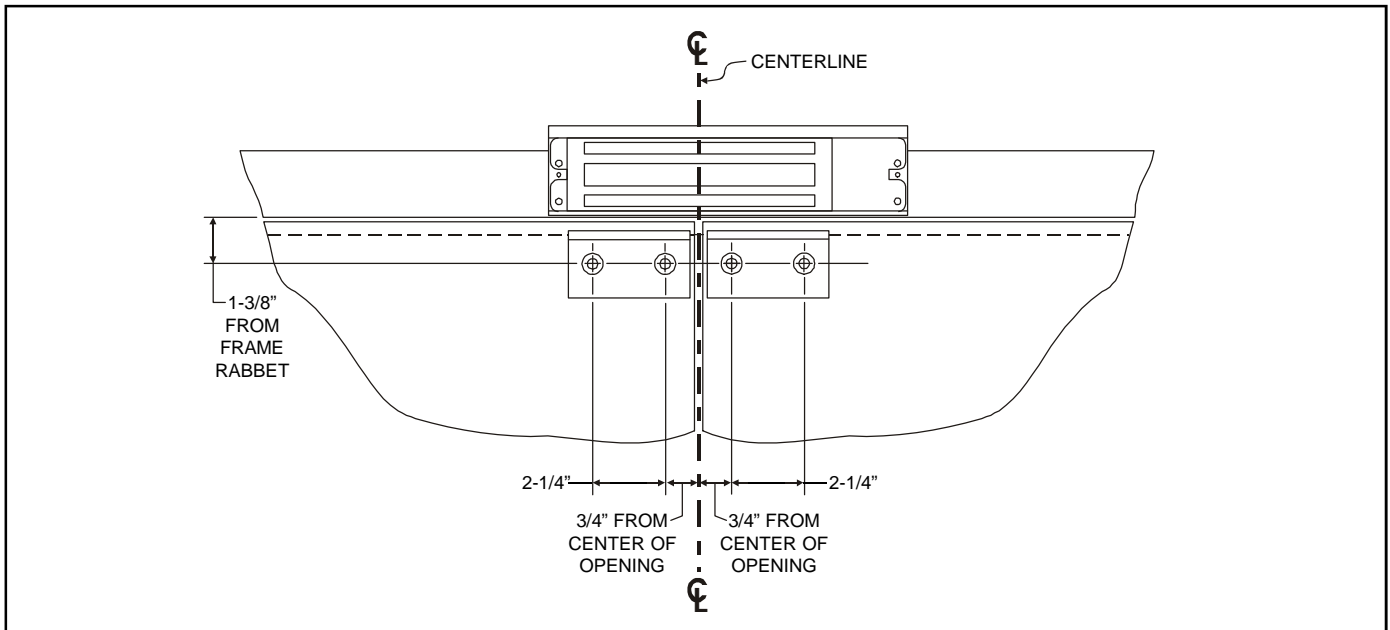
Locate the armature mounting hardware from the hardware kit and attach the armatures to the armature mounting bracket as shown. Firmly tighten the mounting screws with a 3/16" hex wrench.

Failure to properly secure the armatures to the brackets could result in serious injury or possible security breach.



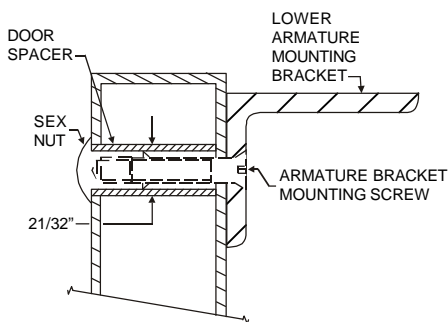
INSTALL THE ARMATURE MOUNTING BRACKETS

- Use the figure below to identify and mark the locations of the armature mounting bracket screw holes on each door leaf. Refer to door and frame prep drawing #301095 for further information.



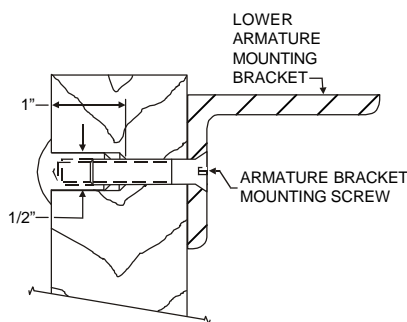
- From the illustrations below select the one that resembles your door type and follow the instructions for drilling the two (2) armature mounting bracket screw holes on each door leaf.

GLASS & ALUMINUM OR HOLLOW METAL DOOR



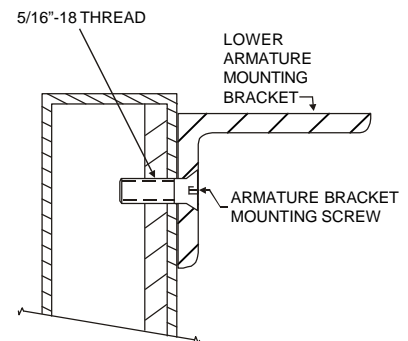
Drill an 11/32" diameter hole through door. From sex nut side only enlarge the 11/32" hole to 21/32" diameter.

SOLID CORE DOOR



Drill an 11/32" diameter hole through door. From sex nut side only drill 1/2" diameter hole to 1" depth.

REINFORCED DOOR

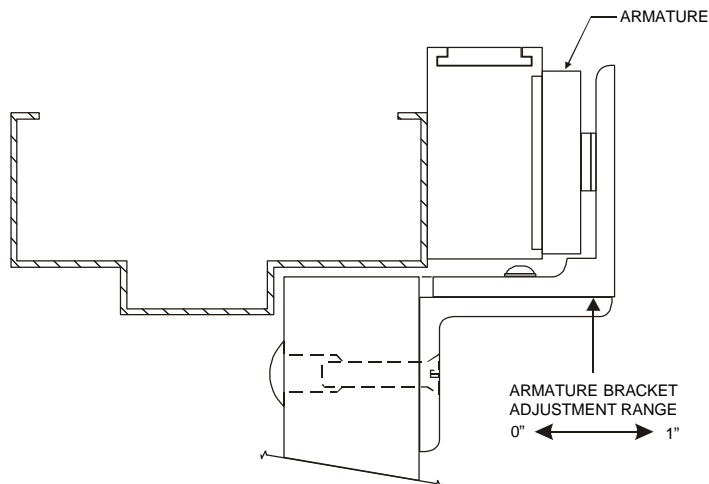
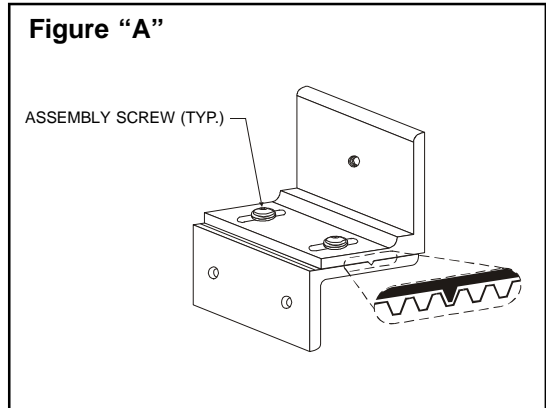


Drill an 11/64" diameter hole and tap for 5/16"-18 thread.

- Mount the armature and mounting bracket assemblies to each door leaf using the appropriate hardware for you door type. Firmly tighten the mounting screws with a 3/16" hex wrench.

ARMATURE ADJUSTMENT

1. Using a 5/32" hex wrench temporarily loosen the armature bracket assembly screws roughly 1-1/2 turns to allow the upper armature bracket to move in and out freely (Ref. Figure "A").
2. Close and latch the door. The mating surfaces of the lock and armatures should fully contact each other. If necessary slide each armature in or out to ensure full contact is made with the lock while still allowing the door to properly close and latch.
3. When the desired adjustment is achieved slowly open each door, taking care to maintain the position of the armature. Firmly tighten the armature bracket assembly screws with a 5/32" hex wrench, making sure that the locking ribs on the upper and lower bracket halves properly mesh (Ref. Figure "A").



EXPLODED PARTS VIEW LEGEND

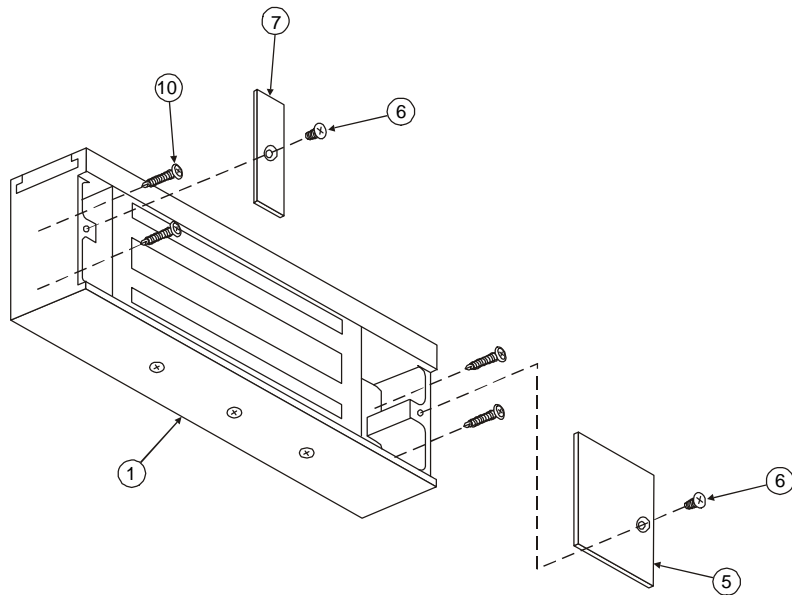
ITEM	DESCRIPTION	PART NO.
1	Lock Assembly	Consult Factory
2	Armature	300013
3	Upper Armature Bracket	300783
4	Lower Armature Bracket	300782
5	Access Cover / Board Assy.	300906
6	Access Cover Screw	300608
7	End Cover	300010

ITEM	DESCRIPTION	PART NO.
8	Armature Bracket Assy. Screw	Hardware Kit P/N 301096
9	Lock Washer	
10	Lock Mounting Screw	
11	Armature Mounting Screw	
12	Armature Spacer	
13	Rubber Washer	
14	Flat Steel Washer	
15	Sex Nut	
16	Door Spacer	
17	Armature Bracket Mtg. Screw	

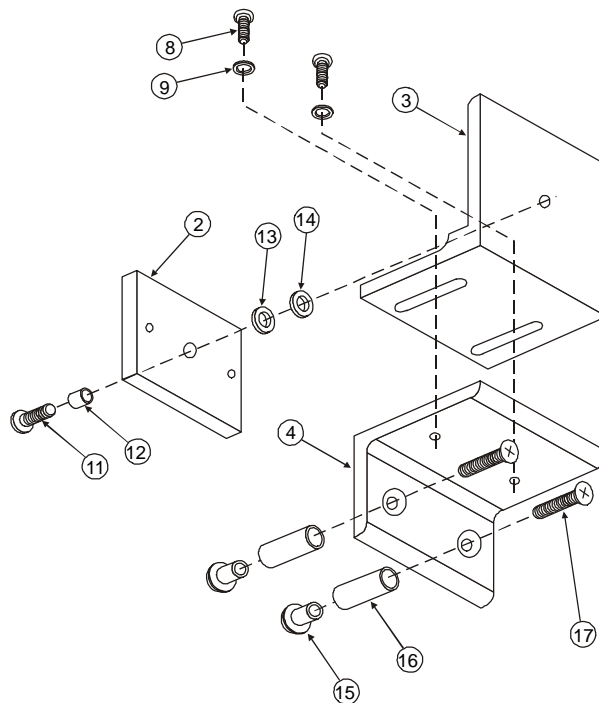
Note: Refer to Page 7 for parts locations.

EXPLODED PARTS VIEW

**LOCK
ASSEMBLY**



**ARMATURE
ASSEMBLY
(TYPICAL)**



Note: Refer to Page 6 for parts legend.

**FOR PRODUCT SUPPORT AND PARTS
ORDERING INFORMATION CONTACT:**

DynaLock Corp.
705 Emmett Street
Bristol, CT 06010
Bus: (877) 396-2562 Toll-Free
(860) 582-4761
Fax: (860) 585-0338

DYNALOCK ON THE INTERNET:

E-mail: info@dynalock.com
Website: www.dynalock.com