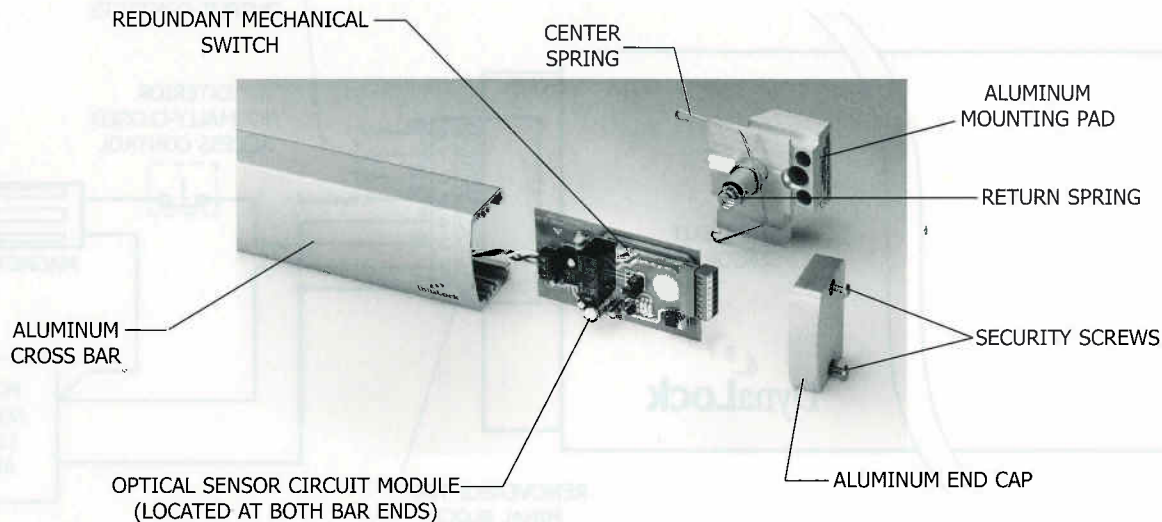


# 6451 Series Exit Sensor Bar

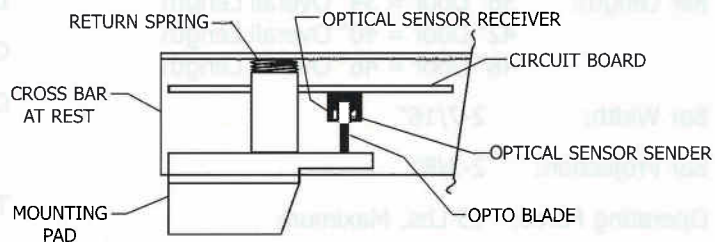
## Internal Components



## 6451 Sensor Operation

### Exit Sensor Bar at rest.

Optical sensor path unobstructed.  
Internal relay energized, contacts held closed,  
electric lock energized.



### Exit Sensor Bar actuated.

(Cross bar depressed)  
Optical sensor path interrupted by opto blade.  
Internal relay de-energized, opening contacts,  
releasing electric lock.  
Redundant mechanical switch will also trigger  
as safety back-up.

