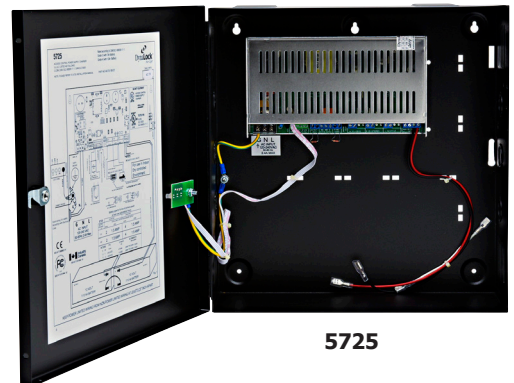


5725 Power Supply

- **Selectable 12/24VDC Output at 1.5A Continuous**
- **Built-in Battery Charger**
- **Fail-Safe & Fail-Secure Lock Outputs**
- **Supervised Fire Alarm/Access Control Interface**
- **AC Fail, Battery Presence/Fail Supervision**
- **Lifetime Warranty**



Description

The DynaLock 5725 Series Power Supply/Charger supplies a regulated 12 VDC or 24VDC at 1.5 Amps nominal continuous current. It's housed in hinged, locking steel enclosure capable of accommodating one or two optional 7AH or 12AH lead acid rechargeable standby batteries.

Model 5725 features individual Class 2 outputs for fail-safe or fail-secure locking devices, a auxiliary 500mA Class 2 output, a supervised input for fire alarm or access control and a cascade facility, allowing two or more power supplies to be tied together for simultaneous fire alarm sequencing.

The 5725 is UL Listed in the US and Canada, CE, FCC and Industry Canada compliance registered. See page 4 for a full breakdown of agency listings and registrations.

Features & Specifications

- Input = 120-240 VAC, 50-60Hz at 2.4 Amps Maximum
- Overall Output = 1.5 Amps Continuous at 12 or 24VDC
- Dual 500mA Fire Alarm/Access Controlled Lock Outputs with Electronic Over-Current Protection Rated to 1 Amp
- Auxiliary 500mA Output
- Supervised Fire Alarm/Access Control Interface with Selectable Latching and Reset Input
- Built-in Dedicated Battery Charger
- 1 Amp Maximum Charging Current
- Auto Switchover To Battery Standby Upon AC Failure
- Automatic Battery Load Test Every 48 Hours
- Battery Reversal Protection
- Low Battery Indication at 11.4/22.8 Volts
- Automatic Low Battery Disconnect at 10/20.2 Volts
- AC, DC and Battery Status LED's on Enclosure Door
- AC and Battery Failure CMOS Relay Outputs
- Battery Leads Included
- Key-Locked Enclosure Lid (Includes 2 Keys)
- Enclosure Size: 12.7"W x 13"H x 4.3"D (323mm x 331mm x 110mm)
- Operating Temperature: 32°F to 120°F (0°C to 49°C)
- Lifetime Warranty

Wiring Details - Model 5725

5725

ACCESS CONTROL POWER SUPPLY CHARGER
UL,ULC LISTED AS FOLLOWS:
UL294,CAN/ULC-60839-11-1, CAN/ULC-S533

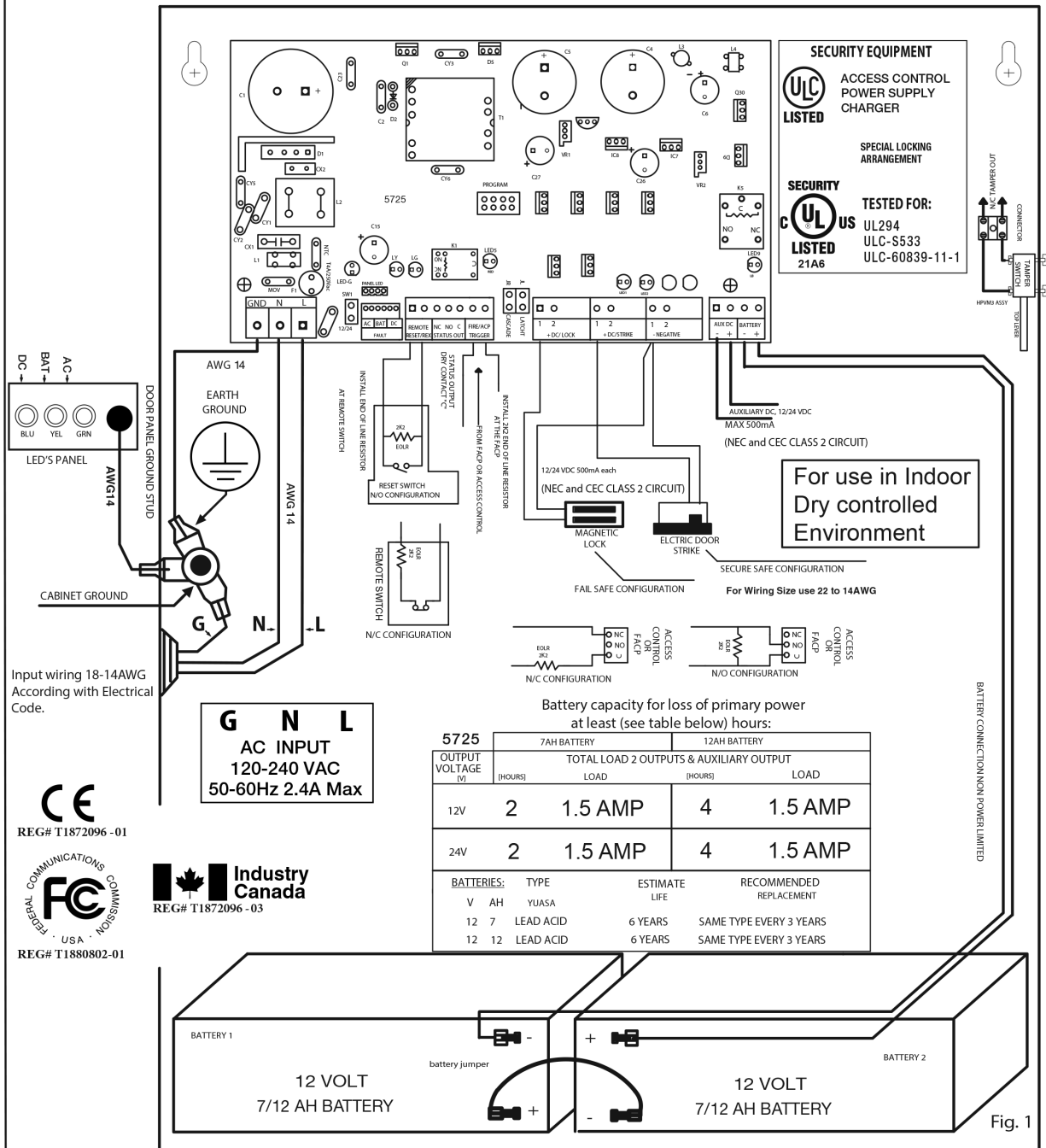
Rated according to CAN/ULC-60839-11-1
Grade 3 (with 7Ah Battery)
Grade 4 (with 12Ah Battery)



NOTE: PLEASE REFER TO 5725 INSTALLATION MANUAL

PART NO: M5725 REV:01

Date of MFG



KEEP POWER LIMITED WIRING FROM NON POWER LIMITED WIRING AT LEAST 0.25" INCH APART

Maximizing The Output Load Capacity of the 5725

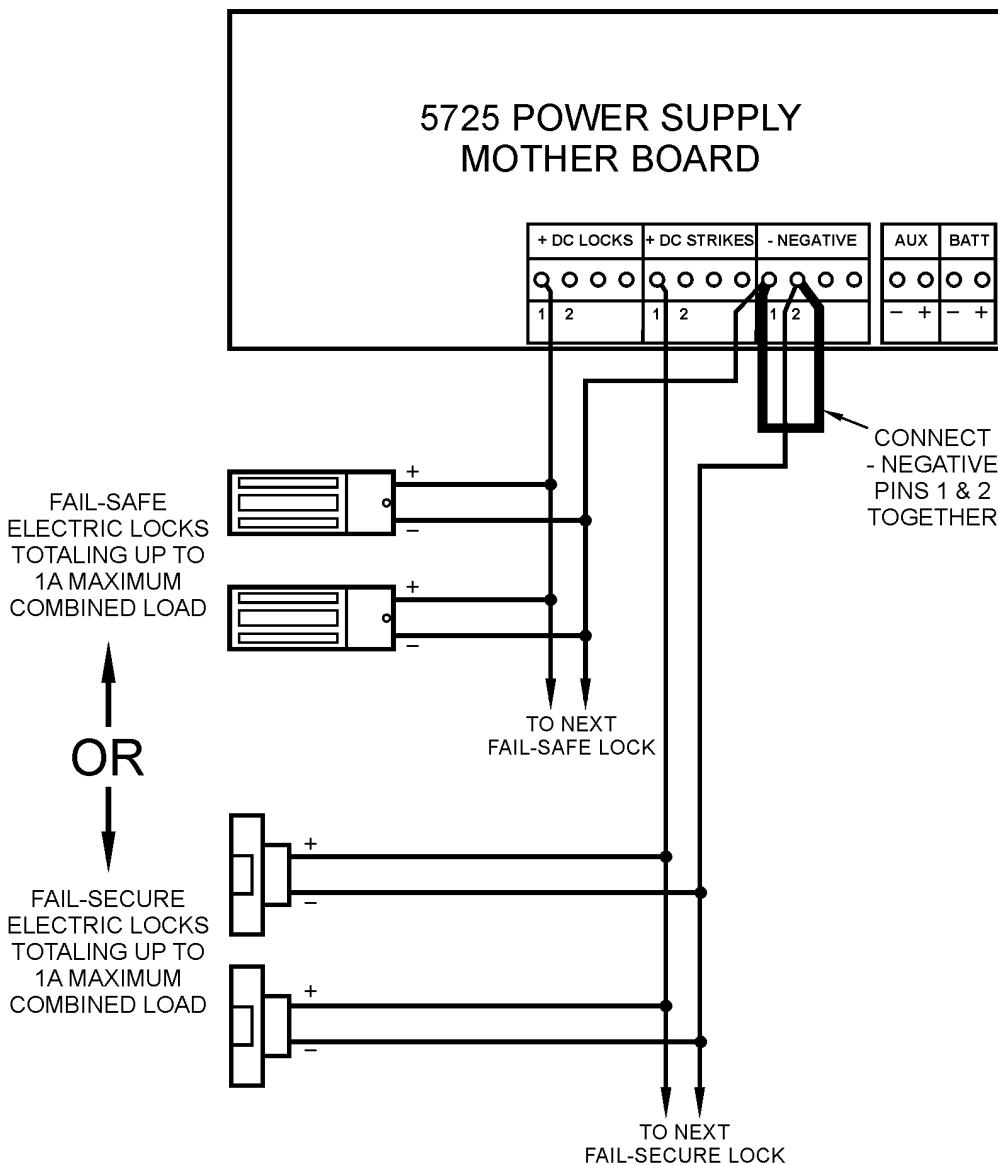
The load capacity of either of the 5725's two 500ma fire alarm & access controllable Class 2 lock outputs may be increased to support up to 1 Amp continuous current draw by simply connecting the -Negative lock output terminals in parallel as shown below.

Power fail-safe locking devices by wiring them in parallel using +DC Locks output pin 1 and either -Negative Pin.

Power fail-secure locking devices by wiring them in parallel to +DC Strikes output pin 1 and either -Negative Pin.

The combined current draw of all connected locks must not exceed 1A maximum per power supply.

In either case the 500mA Auxiliary Class 2 Power Output, which is not controlled by the 5725's fire alarm/access control interface, may be utilized to power tertiary system devices such as relays, timers, visual indicators and/or audible sounders.



Options

- BBU1-7** BATTERY BACK-UP - 7 AH @ 12VDC, 1 battery
- BBU1-12** BATTERY BACK-UP - 12 AH @ 12VDC, 1 battery
- BBU2-7** BATTERY BACK-UP - 7 AH @ 24VDC, 2 batteries
- BBU2-12** BATTERY BACK-UP - 12 AH @ 24VDC, 2 batteries
- PC** POWER CORD - Six foot, 3-wire plug-in line cord
- TS1** SINGLE TAMPER SWITCH KIT - Supervised NC contacts monitor lid opening.
- TS2** DUAL TAMPER SWITCH KIT - Dual Supervised NC contacts monitor lid opening & enclosure bottom tamper.

Accessories

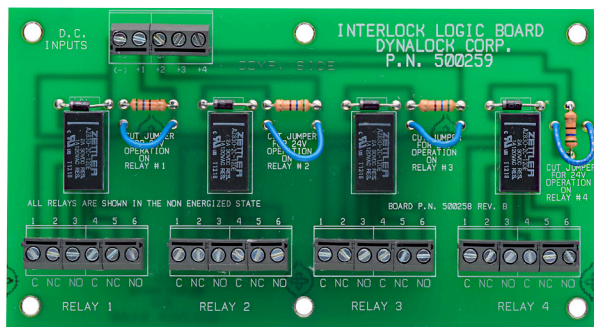
- 500259** INTERLOCK LOGIC BOARD - Accessory controller incorporating four independently triggerable 12/24 VDC, DPDT relays. Facilitates sequencing control of interlocks comprised of 2 or 3 magnetically locked doors. Multiple Interlock Logic Boards may be interconnected to support interlock systems involving more than 3 doors. Contact a DynaLock Sales Engineer for expert assistance in selecting interlock system components and request a price quotation for a Custom System Wiring Diagram, should one be required.

Supplied with double-sided adhesive mounting tape. May be mounted inside the 5725 Power Supply enclosure (if no back-up batteries are installed), or remotely wired.

Interlock Logic Board Dimensions: 6"W x 3.25H x .75"D (152mm x 83mm x 19mm)

Relay Contact Rating: 2A @ 30VDC

Relay Current Draw: 35mA @ 12 or 24VDC Each



UL Listing Standards & Agency Registrations

- UL294** Access Control System Units
- CAN/ULC-60839-11-1** Alarm and Electronic Security Systems - Canada
- CAN/ULC-S533** Egress Door Securing and Releasing Devices - Canada
- CE** European Compliance
- FCC** U.S. Federal Communications Commission
- Industry Canada** Canadian Registration



DYNALOCK CORPORATION
 705 EMMETT STREET / PO BOX 2728
 BRISTOL, CT 06011-2728
 PHONE: 877-DYNALOCK / FAX: 860-585-0338
 E-MAIL: INFO@DYNALOCK.COM
 WEBSITE: WWW.DYNALOCK.COM