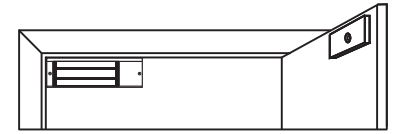
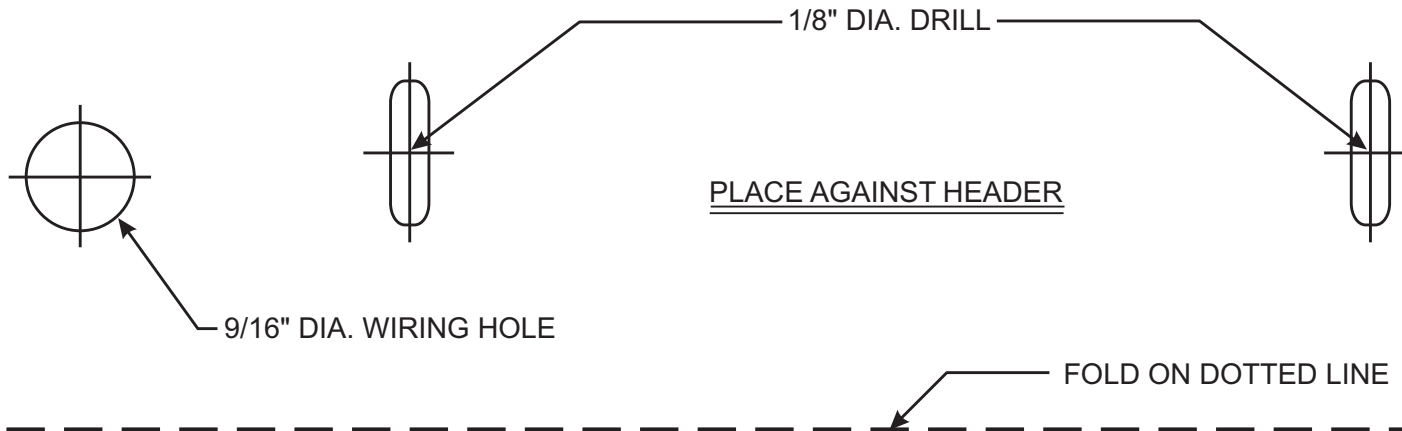




**Emergency Tech Support is available Monday - Friday, 5:00PM-8:00PM (EST)**  
By Calling: Mike @ (860) 637-2394 or Glen @ (860) 637-2599



USE THIS SIDE OF TEMPLATE FOR R.H.R. DOOR. FINISHED INSTALLATION SHOULD APPEAR AS ABOVE.

**REVISED TEMPLATE FOR USE WITH NEW PLASTIC ARMATURE HOUSINGS ONLY**

PLACE AGAINST JAMB OPPOSITE HINGES FOR R.H.R. DOOR INSTALLATION →

# 3006-RHR SERIES ELECTROMAGNETIC LOCK

1/8" DIA. ARMATURE HOUSING MOUNTING SCREW HOLES 1" DEEP (4 REQ'D.)

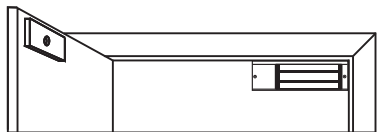


11/32" DIA. DRILL FOR THRU BOLT MOUNTING OR 5/16"-18 TAP FOR MOUNTING ON REINFORCED DOOR (SEE INSTRUCTIONS)



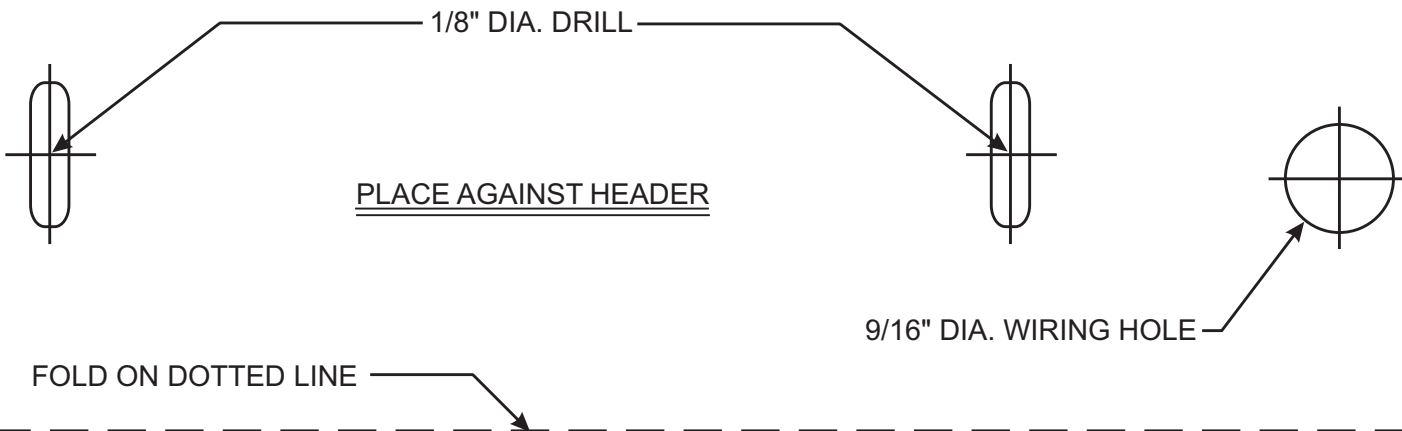


**Emergency Tech Support is available Monday - Friday, 5:00PM-8:00PM (EST)**  
**By Calling: Mike @ (860) 637-2394 or Glen @ (860) 637-2599**



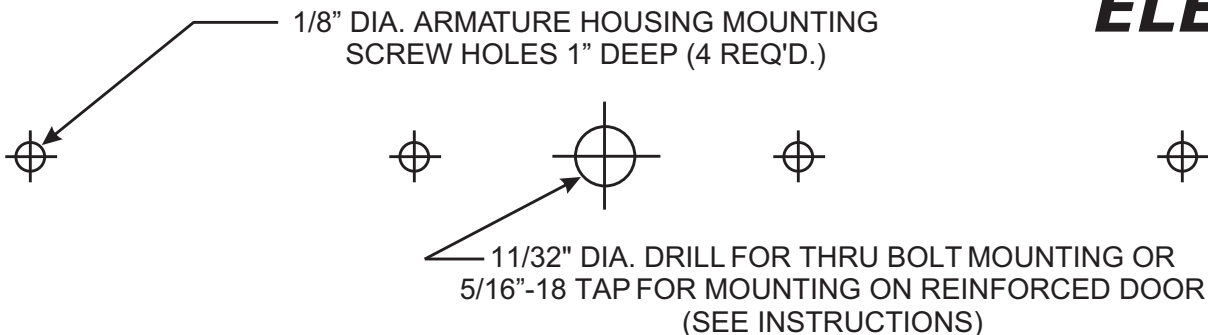
USE THIS SIDE OF TEMPLATE FOR L.H.R. DOOR.  
FINISHED INSTALLATION SHOULD APPEAR AS ABOVE.

**REVISED TEMPLATE FOR USE WITH NEW PLASTIC ARMATURE HOUSINGS ONLY**



FOLD ON DOTTED LINE

PLACE AGAINST JAMB OPPOSITE HINGES FOR L.H.R. DOOR INSTALLATION



# **3006-LHR SERIES ELECTROMAGNETIC LOCK**

