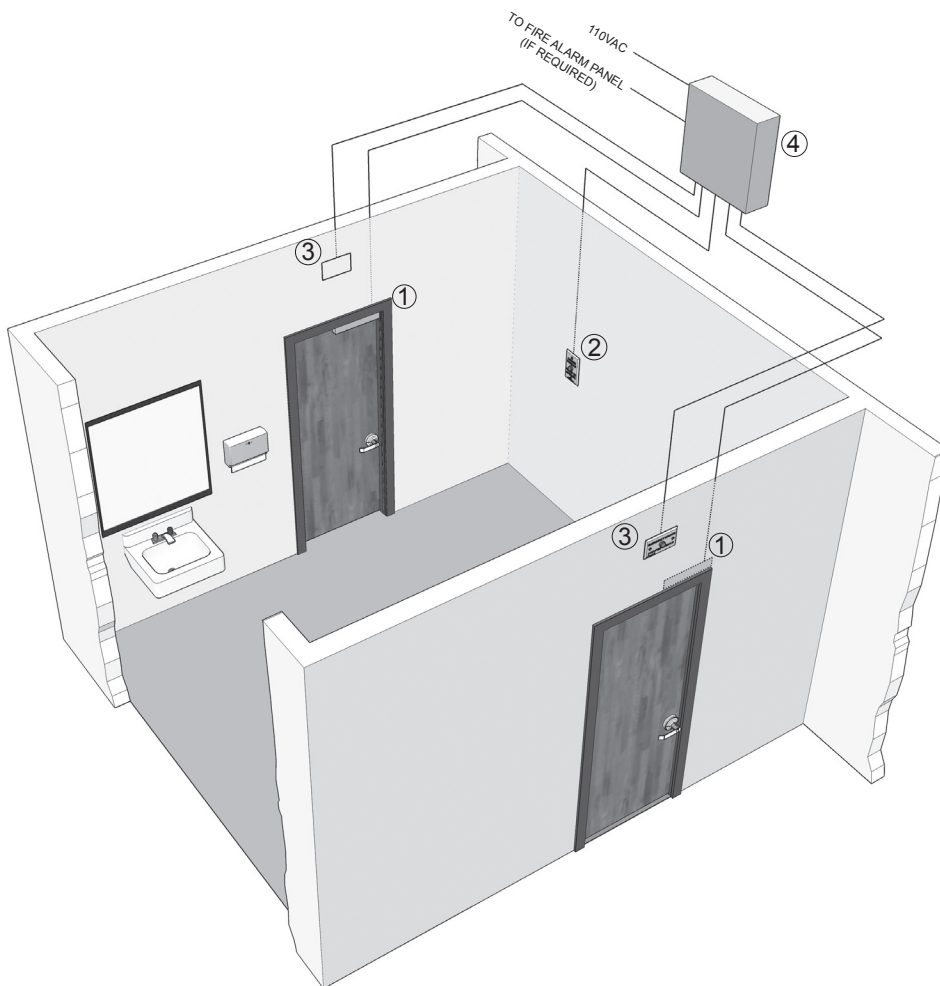


# 8500 Series

## Communicating Bathroom Systems



① 2511 MAGLOCK



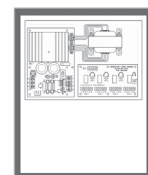
② 6110 BUTTON



③ 6110 BUTTON



④ 5500 POWER SUPPLY



*Specific part & ordering information on reverse*

### Application

Communicating Bathroom Systems ensure privacy for the occupant of a single bathroom shared by adjacent rooms. The system also allows for emergency access should the need arise. Typical installations include hospitals, nursing and convalescent homes, schools and dormitories.

# 8500 Communicating Bathroom

---

## System Description of Operation

When the bathroom is not occupied all doors are normally closed and unlocked. All switch indicators are not illuminated. Upon entering the bathroom from one of the rooms the occupant presses the inside pushbutton switch to lock all doors. All doors must be closed for locking to occur. Interior and exterior indicators will illuminate red to indicate bathroom is occupied and doors are locked. To unlock doors and exit, occupant presses inside pushbutton again. All indicators will extinguish and all doors will unlock. Depressing outside emergency pushbutton switches, located above or adjacent to each door, will unlock all doors. Outside pushbutton, if used, must be pushed again to reset system to normal use. When connected to a fire panel system all doors will unlock during a fire emergency.

---

## Model 8500-2

### Two Door Communicating Bathroom System

#### System Components

(2) 2511-DSM	Maglock with door status switch
(1) 6110-CB-ILM-24V	Red pushbutton, SPDT, maintained silk screened "LOCKED WHEN LIT, PRESS TO OPERATE"
(2) 6110-EO-ILM-24V	Red pushbutton, SPDT, maintained silk screened "EMERGENCY UNLOCK, OCCUPIED WHEN LIT"
(1) 5500-FAC-ILB-24V	Power supply, 24VDC, 2A
(1) 900274	System wiring diagram

*When ordering, simply specify "8500-2"*

---

## Model 8500-3

### Three Door Communicating Bathroom System

#### System Components

(3) 2511-DSM	Maglock with door status switch
(1) 6110-CB-ILM-24V	Red pushbutton, SPDT, maintained silk screened "LOCKED WHEN LIT, PRESS TO OPERATE"
(3) 6110-EO-ILM-24V	Red pushbutton, SPDT, maintained silk screened "EMERGENCY UNLOCK, OCCUPIED WHEN LIT"
(1) 5500-FAC-ILB-24V	Power supply, 24VDC, 2A
(1) 900419	System wiring diagram

*When ordering, simply specify "8500-3"*

**DYNALOCK CORPORATION**  
705 EMMETT STREET / PO BOX 2728  
BRISTOL, CT 06011-2728  
PHONE: 877-DYNALOCK / FAX: 860-585-0338  
E-MAIL: INFO@DYNALOCK.COM  
WEBSITE: WWW.DYNALOCK.COM

Featuring  
  
**DynaLife**<sup>®</sup>  
Lifetime Warranty