

7450 Series

Stand Alone Digital Keypad



- **IP65 Water Resistant & UV Resistant**
- **Up To 500 User Codes**
- **Narrow Mullion Design**
- **Built In Tamper Detection**
- **Backlit Keypad**
- **Lifetime Warranty**

Description

The DynaLock 7450 narrow, mullion-style keypad is designed to be the most cost effective access control solution for indoor and outdoor residential, commercial and institutional applications. It will store 1 to 500 user PIN codes, with up to three access levels for each.

The 7450 features a user-friendly setup menu, which makes configuration and use very simple for end-users. A wide array of functions and auxiliary modes provide extra flexibility and security, allowing it to operate as a single or two-door access controller.

The 7450 incorporates a UV-resistant, epoxy sealed polycarbonate housing, designed to withstand the elements. Red backlit keys enhance visibility in low-light conditions and a flexible power input allows the unit to operate on 12-24VDC or 16-24VAC. Two Form-C relay outputs, rated at 2 Amps, as well as REX and Auxiliary inputs are provided.

Standard Features

- **500 User Codes:** Up to 500 codes can be programmed using one of two easy enrolling methods.
- **Flexible Power Input:** 12-24 VDC or 16-24VAC.
- **3 User and Access Levels:** Program one to three different levels of access for each individual user or for the entire system.
- **Multiple Inputs and Outputs:** Unit includes a REX and Auxiliary input as well as two form C output contacts rated at 2 Amps.
- **Audio and Visual Recognition:** Equipped with an internal sounder and two tri-colored status/programming LED's.
- **Multiple Auxiliary Modes:** Ten programmable auxiliary modes including: Door Ajar, Forced Door, Alarm Shunt, and Door Monitor.
- **Weather Resistant:** IP65 water and UV resistant.
- **Vandal Resistant:** Polycarbonate casing with a built in optical tamper sensor.
- **Installer Friendly:** Includes an installation kit and self-adhesive mounting template.
- **Lifetime Warranty**

7450 Series Digital Keypad

Specifications

Physical Characteristics

Size: 5.33" H x 1.74" L x 1.12" W
Weight: 0.39 lbs
Material: Polycarbonate
Cable: 18AWG/10-Conductor, 3 Ft long

Electrical Characteristics

Voltage Range: 12-24VDC, From power supply
16-24VAC, From a transformer
Input Current: Standby: 75mA at 12VDC
Maximum: 125mA at 12VDC
Relay Outputs: Main: 2A Form C, N.O. and N.C.
Auxiliary: 2A Form C, N.O. and N.C.
Tamper: Optical back tamper sensor
Inputs: REX: N.O. dry contact
Auxiliary (In/Monitor): N.O. dry contact
10 programmable modes

Environmental Characteristics

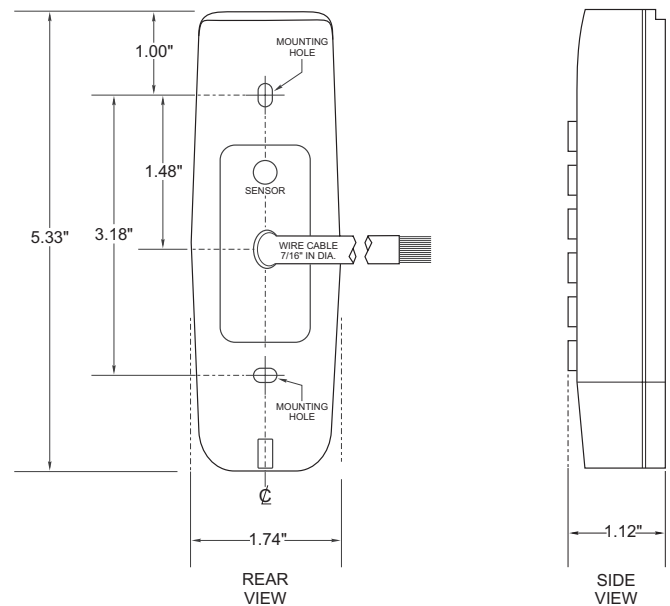
Operation: Water resistant, suitable for outdoor use
Meets IP65
Temperature: -30°C to 65°C (-22°F to 150°F)
Humidity: 0 to 95% (non-condensing)
RFI Protection: >20V/m up to 1000Mhz

Operational Characteristics:

Capacity: 500 users, single/dual code for each
Keypad: 2x6 key pad for local programming
and 4 to 8 digit PIN code entry
User Levels: Normal/Secure/Master



**Red
Backlit Keypad**



DYNALOCK CORPORATION
705 EMMETT STREET / PO BOX 2728
BRISTOL, CT 06011-2728
PHONE: 877-DYNALOCK / FAX: 860-585-0338
E-MAIL: INFO@DYNALOCK.COM
WEBSITE: WWW.DYNALOCK.COM

Featuring

DynaLife[®]
Lifetime Warranty