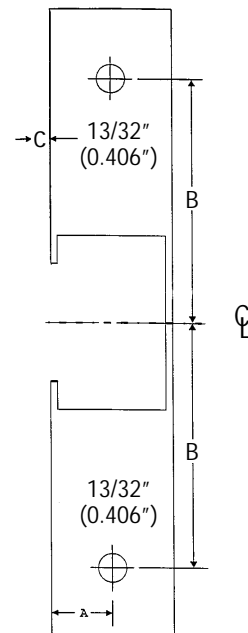


1661 DOUBLE DOOR HOUSING

Instructions

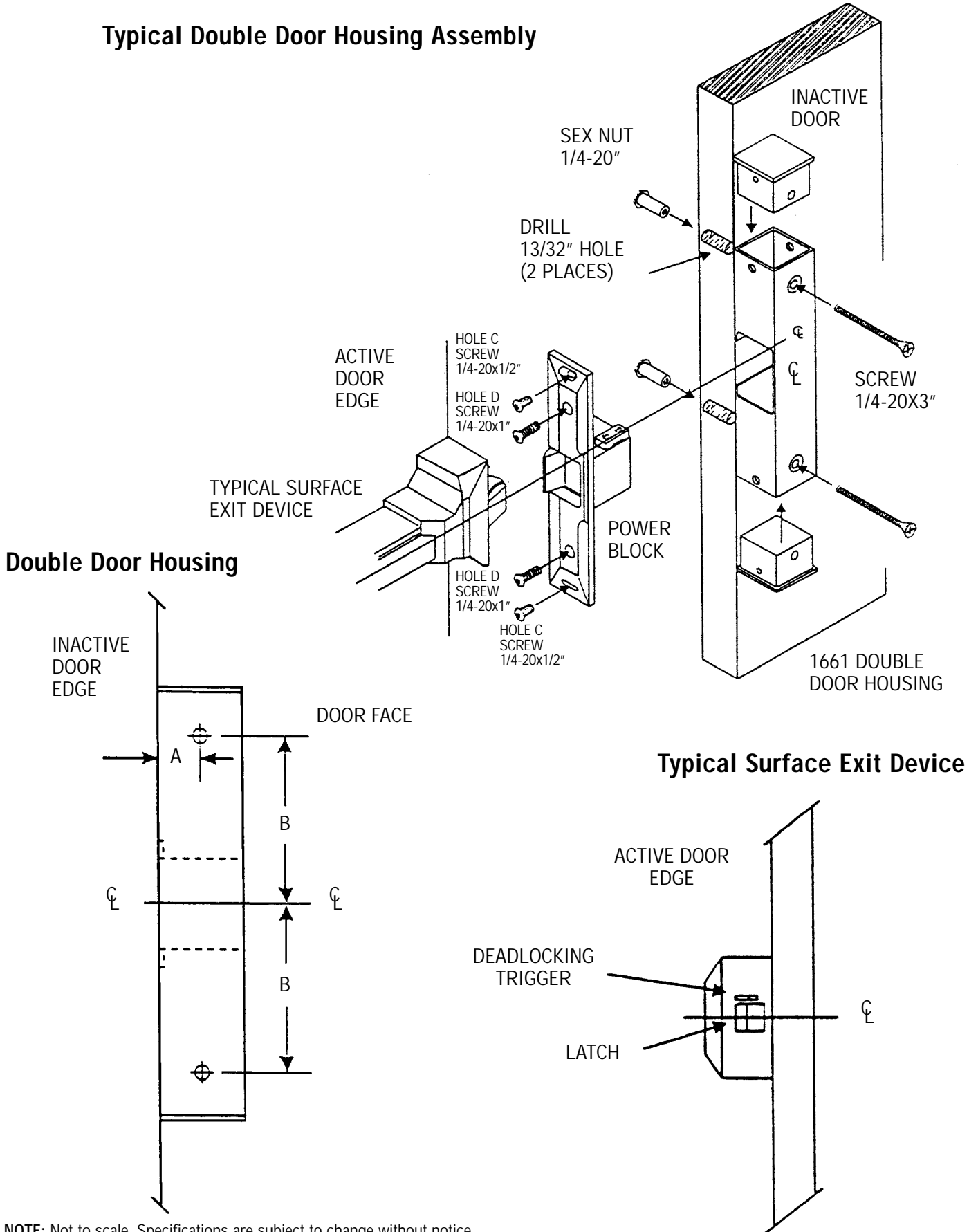
- 1) Mark center line (CL) of existing device latch from active door to inactive door.
- 2) Place template on inactive door so that CL mark aligns with CL of template and dotted vertical line of template aligns with vertical edge of inactive door.
- 3) Mark the mounting holes for the Double Door Housing (**DDH**) on the inactive door.
- 4) Drill two 13/32" (0.406") holes through inactive door.
- 5) Drill wire access hole into desired area of **DDH**. Pull two (2) wires through the access hole and connect to strike. (Polarity is not observed)
- 6) Temporarily mount **1661** strike to **DDH** through the slotted holes (Hole C) using 1/2" button head socket cap screws. (BHSCS)
- 7) Mount **DDH** to inactive door using the two (2) 1/4-20x3" screws and 1/4-20" Sex Nuts supplied.
- 8) Adjust electric strike insert horizontally (If necessary), until Pullman Latch engages when door is closed. (See Fig. 4 on 0161 installation instructions if further horizontal insert adjustment is necessary)
- 9) Mark, drill and tap Hole D for 1/4-20x1" BHSCS provided to secure the final location.

MEASUREMENT	FRACTIONAL INCHES	DECIMAL INCHES	METRIC (mm)
A	27/32	.844	21.43
B	3-1/2	3.500	88.90
C	1/4	0.250	6.35



1661 Double Door Housing Installation Instructions (con't)

Typical Double Door Housing Assembly



NOTE: Not to scale. Specifications are subject to change without notice.