

1661 Series

Electric Rim Strikes

- **12/24 VDC/VAC**
- **Fully Reversible**
- **Attractive Appearance**
- **Fully Adjustable**



Description

DynaLock 1661 Series Electric Strikes for Rim Exit Devices are universally adaptable to suit all door and frame types and accommodate rim exit devices with 1/2" to 3/4" latch projection. They feature a hazard-free radius design and an attractive architectural appearance. For surface applications, a frame depth of 1-5/8" is required (for the electrical insert). Specify the RMP option for semi-mortise applications. To simplify ordering and speed installation, all 1661 Series feature AC or DC operation (specify 12 or 24V) and are fully reversible for left and right-hand doors.

The 1661 Series has convenient slotted horizontal holes on the faceplate to aid alignment with the exit device. Locking socket allen-head cap screws are included to prevent loosening resulting from continual door usage. Alignment problems are easily handled with our horizontally adjustable electrical insert. The faceplate does not need to be moved.

Typical applications include non-fire rated doors in most commercial, industrial, institutional centers, retail outlets and health care facilities.

Standard Features

- Operates with Rim Exit Devices
- Fail Secure Lock Mode
- Horizontal Adjustability
- Screw terminals for wire connections
- UL Listed 1034 Burglary Resistant
- Non-handed
- Locking socket head fasteners
- 3 Year Limited Warranty
- US32D Brushed Stainless Steel Finish

Options

- RMP** REAR MOUNTING PLATE - Kit for semi-mortise installations (up to 1/4") or reinforcement in surface applications.
- DDH** DOUBLE DOOR HOUSING - For pairs of doors. Allows mounting on inactive door.

1661 Series Electric Rim Strikes

General Electrical Specifications

MODEL	VOLTAGE	SOUND	DUTY	AMPS	OHMS
1661-12	12VAC	Buzz	Intermittent	0.15	61
	12VDC	Silent	Continuous	0.20	61
1661-24	24VAC	Buzz	Intermittent	0.07	215
	24VDC	Silent	Continuous	0.11	215

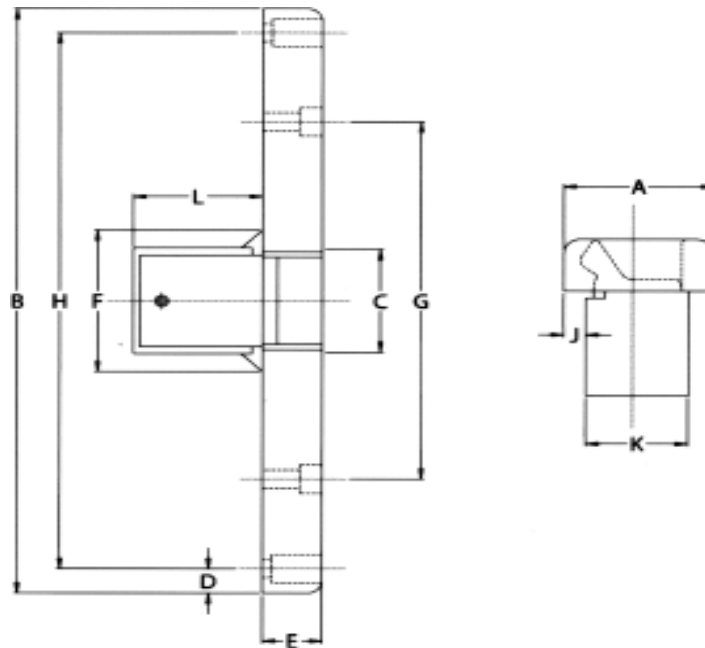
Duty Ratio 1:5 ~ All locks Fail Secure

Intermittent Duty = Energized less than 1 min. ~ Continuous Duty = Energized 1 min. or more

Profile Dimensions

	A	B	C	D	E	F	G	H	J	K	L
FRACTIONAL INCHES	1-3/4	9	1-1/2	3/8	3/4	2-3/8	5-1/2	8-1/4	5/16*	1-5/16	1-5/8
DECIMAL INCHES	1.750	9.000	1.500	.375	.750	2.375	5.500	8.250	.312	1.310	1.625
METRIC MILLIMETERS	44.50	228.00	38.10	9.50	19.05	60.00	139.50	209.00	7.94	33.00	41.28

* MAX



DYNALOCK CORPORATION
 705 EMMETT STREET / PO BOX 2728
 BRISTOL, CT 06011-2728
 PHONE: 877-DYNALOCK / FAX: 860-585-0338
 E-MAIL: INFO@DYNALOCK.COM
 WEBSITE: WWW.DYNALOCK.COM

