

NEW

DynaLock™
For Life™

6500 Series

High Visibility Exit Controls



- *Electroluminescent Illuminated Signage*
- *Heavy Duty*
- *Special Finishes*
- *Tamper Resistant*
- *12/24 VDC*
- *Lifetime Warranty*

Description

DynaLock 6500 Series High Visibility Pushplates are the next generation of exit controls. With a variety of lighted signage options, they integrate the latest in electroluminescent technology with a heavy duty pushplate. Available with either pneumatic time delay (PTD), momentary, or alternate-action switches.

Too often, people perish in fires not because of the flames, but the smoke. Traditional lighting is barely visible in smoke filled areas. Electroluminescent light is a true field-source emitter, having greater perceived brightness at considerable distances, helping occupants safely find the 6500 exit control.

Specify the 6500 Series for controlled egress anywhere a pushbutton would typically be used, and long lasting, superior visibility is desired.

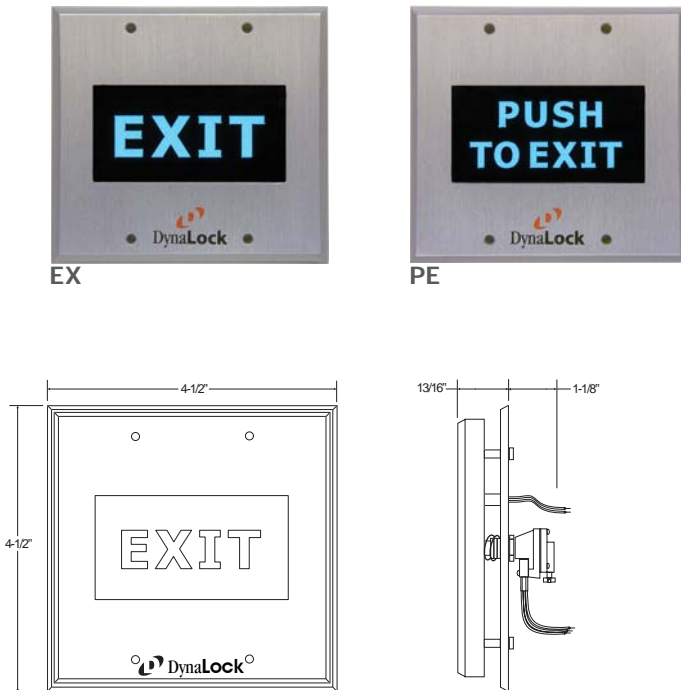
Standard Features

- **Enhanced Visibility** in smoke and/or darkness.
- **Illuminated Signage** using electroluminescent "aqua light". Superior visibility helps to guide occupants towards exit control. Can be wired to stay on continuously or during emergency only.
- **Supplements Building Exit Signs**
- **Long Life:** Lamp illuminates indefinitely. Optimal brightness up to 10,000 hours (continuous usage). Field replacements are available.
- **Low Profile:** Extends only 13/16" from the wall.
- **Durable** anodized aluminum available in a variety of architectural finishes. US28 satin aluminum standard.
- **Tamper Resistant:** Allen head mounting screws behind front plate. No light bulb filaments to break.
- **Lifetime Warranty:** Made in the USA by DynaLock, with over 20 years experience in the manufacture of electromagnetic locks.

LIFE SAFETY PRODUCTS
FULLY INTEGRATED SECURITY SYSTEMS
Electromagnetic Locks | Controls | Power Supplies

6500 Series Pushplates

6500 Series Double Gang



Model Selection:

65 - XX - XXX - XX - *

Specify Operating Voltage

12 12 VDC
24 24 VDC

Specify Switch Format

MO MOMENTARY SPDT
AA ALTERNATE ACTION SPDT
PTD PNEUMATIC TIME DELAY
2-60 SEC, SPDT FORM Z

Specify Signage

EX "EXIT"
PE "PUSH TO EXIT"
OP "OPEN"
PO "PUSH TO OPEN"
SA "SALIDA" SPANISH (EXIT)
SO "SORTIE" FRENCH (EXIT)
ES "EXIT/SALIDA" ENGLISH & SPANISH
EF "EXIT/SORTIE" ENGLISH & FRENCH
AB "ABRA" SPANISH (OPEN)
OU "OUVREZ" FRENCH (OPEN)
OA "OPEN/ABRA" ENGLISH & SPANISH
OZ "OPEN/OUVREZ" ENGLISH & FRENCH

* Options

DP DPDT SWITCH - Not available with PTD option.
SF SPECIAL FINISH - Standard finish is US28 Satin Aluminum.
CS CUSTOM SIGNAGE - Special order. Please consult factory.

Example: 65 - PE - MO - 12 - US3

Specifications

Contact rating: PTD: 10 Amps @ 125VAC
All Others: 6 Amps @ 125VAC
Terminations: 7" Color-Coded 18AWG Leads
Finish: US28 Satin Aluminum
Current Draw: 30mA @ 12 or 24 VDC

Special Finishes

US3	Bright Brass	US10B	Dark Bronze
US4	Satin Brass	US19	Black Satin
US10	Light Bronze	US26	Bright Chrome
US13	Medium Bronze		

DYNALOCK CORPORATION
705 EMMETT STREET / PO BOX 2728
BRISTOL, CT 06011-2728
PHONE: 877-DYNALOCK / FAX: 860-585-0338
E-MAIL: INFO@DYNALOCK.COM
WEBSITE: WWW.DYNALOCK.COM

Featuring

DynaLife[®]
Lifetime Warranty