

Electromagnetic Locks

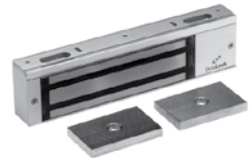


3000 Series 1500 Lb.



3000

Electromagnetic locks, surface mounted for outswing or inswing single or double doors.
 Size: 1-1/2"D x 2-3/4"H x 11"L Single or 22"L Double
 Multi-voltage field selectable 12/24 VAC/VDC
 Current Draw: 0.42 Amps @ 12V Single / 0.84 Amps Double (Except 3006)
 0.21 Amps @ 24V Single / 0.42 Amps Double (Except 3006)
 0.5 Amps @ 12V / 0.3 Amps @ 24V (3006)



3001

MODEL	PRODUCT	FINISH	LIST PRICE
3000	Single Electromagnetic Lock Outswing	US28	443.00
3001	Single Electromagnetic Lock Pair Outswing	US28	491.00
3002	Double Electromagnetic Lock Outswing	US28	886.00
3000TJ30	Single Electromagnetic Lock Inswing	US28	538.00
3001TJ31	Single Electromagnetic Lock Pair Inswing	US28	584.00
3002TJ32	Double Electromagnetic Lock Pair Inswing	US28	1076.00
3006	Single Electromagnetic Lock with Built-in P.I.R.	US28	928.00

OPTIONS LIST PRICE



3002

• DSM	Door Status Switch - Signals door closed or ajar.	56.00
• DSM2	Door Status Switch - For the 3002 Series.	112.00
• HSM	High Security Monitor. Includes the following: Door Status Switch - Signals door closed or ajar. Dynastat Force Sensor - Indicates efficient magnetic bond.	89.00
• HSM2	High Security Monitor - For the 3002 Series.	178.00
• VOP	Value Option Package. Includes the following: Door Status Switch - Indicates door closed or ajar. Dynastat Force Sensor - Indicates efficient magnetic bond. Anti-Tamper Switch - Signals removal of wiring access cover. Relock Time Delay - Adjustable 1-80 Seconds.	155.00
• VOP2	Value Option Package - For the 3002 Series.	310.00
• TD	Relock Time Delay - Adjustable 1-80 Seconds.	66.00
• CLH	Custom Length Housing - See page 19.	
• LC	A 3000 Series coil assembly supplied in a 2000 Series multi-piece housing. Specify LC after any 3000 Series model number. Not available on 3006.	
• * LCB	Basic Lock Less Circuit Board	Single Deduct (20.00) Double Deduct (40.00)
• LED	Bi-Color LED - For local signaling of lock status. (Requires HSM or VOP Option. Not available on TJ models.)	36.00
• LED2	Bi-Color LED's (2) - For the 3002 Series. (Requires HSM2 or VOP2 Option. Not available on TJ models.)	72.00
• LP	Low Power Coil - 12V only @ 0.16 Amps (Single Lock) 12V only @ 0.2 Amps (3006)	11.00
• LP2	Low Power Coils - 12V only @ 0.32 Amps (Double Lock)	22.00
• ATS	Anti-Tamper Switch - Signals removal of wiring access cover (3006 only, all other models use VOP).	42.00
• OFA	Offset Armature - For narrow style storefront doors. (When ordered with lock)	N/C
• SF	Special Finish - Special anodized finishes see page 47.	

Notes: • DSM, HSM, VOP and LED options not available on the 3001 Series.
 * DSM, HSM, VOP, TD and LED options not available with the LCB option.
 • Not available on 3006.



NYC MEA
#23-92-E

CSFM